

Institutional stainless AISI 304 handle

Handles specially designed for offices and institutional buildings with standard applications.

Stainless steel AISI 304 finish

It is an austenitic steel (18% chromium, 8% nickel). Although austenitic steel is not magnetic, once it's been mechanized it can modify its structure and be attracted by a magnet. It offers excellent corrosion resistance, even in outdoors installations.

Features

Recoil spring protected by a Delrin cartridge for the rose. Spiral spring system in institutional plate and long plate. Fixing with a through bolts/screw, except in the institutional plate, which is fixed with through bolts.

Regulations

It meets the requisites of the UNE-EN 1906 standard for building fittings.

It is also above the maximum grade of the corrosion resistance standard UNE-EN 1670.

Ultraviolet resistance: unaffected.

Excellent resistance to chemical attacks.

Fixing system

Depending on each model, fixing is carried out with fixed through bolts, floating through bolts or coach screws straight onto the door's leaf.



Institutional stainless AISI 304 handle

Sena AISI 304

The pack with a rosette includes

- » A set of handles with an internal plate and a cover, a 8x105 mm spindle, 2 recoil springs, 4 coach screws, 2 through bolts, 2 bolts and an Allen key.

The pack with a long plate includes

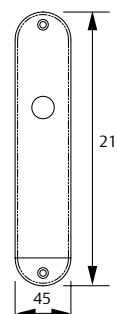
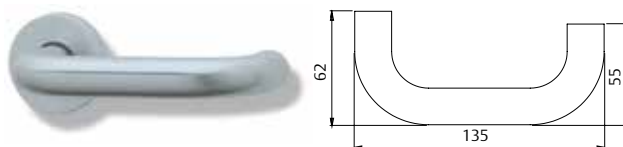
- » A set of handles with an internal plate and a cover, a 8x105 mm spindle, 2 recoil springs, 4 coach screws, 2 bolts and an Allen key.

The pack with a squared plate includes

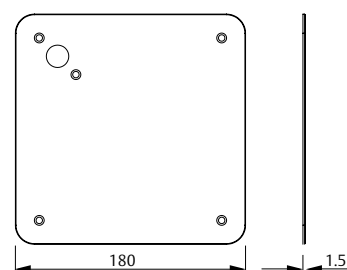
- » A set of handles with a 1'5 mm-thick internal plate and a cover, a 8x105 mm spindle, 2 recoil springs, 4 floating through bolts, 4 coach screws, 2 through bolts and an Allen key.

Functions

- » Entrance keyhole at 85, 72, 70 and 47 mm.
- » Privacy: deadbolt at 85, 72, 70 and 47 mm.
- » Passage



Rosette	Product code	Finish
Rosette	MS5R800	IS-(includes through bolts)
Long plate*	Product code	Finish
Passage	MS5L800	IS-(includes through bolts)
Cylinder at 47 mm	MS5LR800	IS-(includes through bolts)
Cylinder at 70 mm	MS0L847	IS-(includes through bolts)
Cylinder at 72 mm	MS0L870	IS-(includes through bolts)
Cylinder at 85 mm	MS0L872	IS-(includes through bolts)
Deadbolt at 47 mm	MS0L885	IS-(includes through bolts)
Deadbolt at 70 mm	MSEL847	IS-(includes through bolts)
Deadbolt at 72 mm	MSEL870	IS-(includes through bolts)
Deadbolt at 85 mm	MSEL872	IS-(includes through bolts)
Condensa a 85 mm	MSEL885	IS-(includes through bolts)
Squared plate*	Product code	Finish
Passage	MS5C800	IS-(includes through bolts)
Cylinder at 47 mm	MS0C847	IS-(includes through bolts)
Cylinder at 70 mm	MS0C870	IS-(includes through bolts)
Cylinder at 72 mm	MS0C872	IS-(includes through bolts)
Cylinder at 85 mm	MS0C885	IS-(includes through bolts)
Deadbolt at 47 mm	MS3C847	IS-(includes through bolts)
Deadbolt at 70 mm	MS3C870	IS-(includes through bolts)
Deadbolt at 72 mm	MS3C872	IS-(includes through bolts)
Deadbolt at 85 mm	MS3C885	IS-(includes through bolts)



* Includes one mechanism per set



Institutional stainless AISI 304 handle complements

Key holes ø50

The pack includes:

- » A set with support pieces and covers.
- » 4 coach screws.

Finish

- » IS304



Product code	Finish
MB0RBOM	IS-

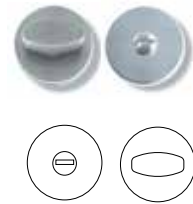
Thumb turns ø50

The pack includes:

- » A set with support pieces and covers.
- » 4 coach screws.

Finish

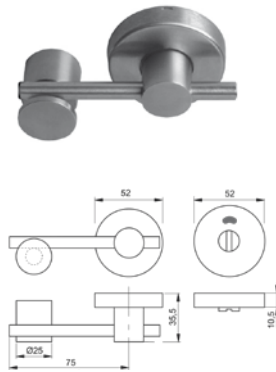
- » IS304



Product code	Finish
MBOREME	IS-

Door frame deadbolt

- » Deadbolt to install in the door frame, no lock requirement.
- » Deadbolt to install in the sliding door frame, no locks requirement.
- » Limited rotation to 180 degrees.



Product code	Features
MARCOEMEIS	Deadbolt without lock
MARCOEMECORIS	Deadbolt for sliding door without lock

Doorstop for floor

Ø 20 x 35 mm

The pack includes:

- » A doorstop
- » A screw
- » A stopper for floor

Finish

- » IS304



Product code	Features
TOPINOX20	Doorstop for floor

Institutional stainless AISI 304 handle Complements

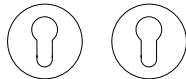
Key holes ø50

The pack includes:

- » A set with support pieces and covers.
- » 4 coach screws.

Finish

- » IS304



Product code	Finishes
MB0RBOM	IS-

Thumb turns ø53

The pack includes:

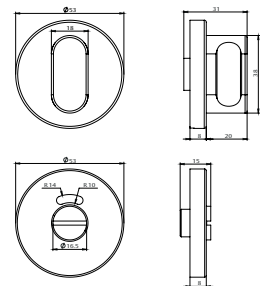
- » A set with support pieces and covers. 4 coach screws.

Finish

- » IS304



Product code	Finishes
MB0RBOMSS	IS-



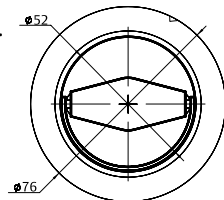
Flush ring Socket pull

The pack includes:

- » A set with support pieces and covers.
- » 4 coach screws.

Finish

- » IS304



Product code	Finishes
MBOREMEOCIS	IS-

Flush pull handle - Oval

The pack includes:

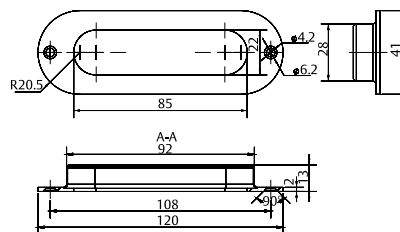
- » 4 coach screws.

Finish» IS304

TIRUNELOCS IS

Finish

Product code



Product code	Finishes
TIRUNELOCS	IS-

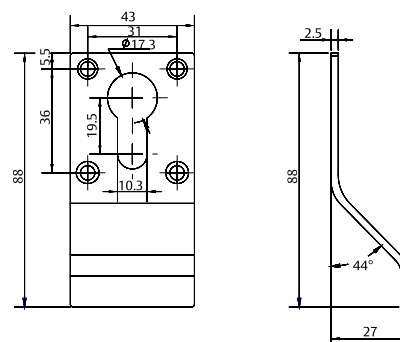
Cylinder pull - Europrofile

The pack includes:

- » 4 wood screws.

Finish

- » IS304



Product code	Finishes
TIRADORBOMIS	IS-